

# A Forklift King Forklift Allows You To Make More Money, Saves You Time, Makes The Job Quicker AND Easier With Less Hassles.

**Take Your Time To Scroll Through Our Catalog And Use  
The QR Code To Watch Online Videos Today So You Can  
See Exactly What You'll Be Getting With Your New  
Forklift King Forklift.**



**KING 20FL**  
(2.0 TON DIESEL FORKLIFT)



**KING 25FL**  
(2.5 TON DIESEL FORKLIFT)



**KING 35FL**  
(3.5 TON DIESEL FORKLIFT)



**KING 50FL**  
(5.0 TON DIESEL FORKLIFT)



**KING 50C**  
(5.0 TON DIESEL FORKLIFT)



**KING 70 FL**  
(7.0 TON DIESEL FORKLIFT)



**KING 35AT**  
(3.5 TON DIESEL 2WD ALL TERRAIN FORKLIFT)



**KING 35 4WD**  
(3.5 TON DIESEL 4WD FORKLIFT)



Please Note: Prices are subject to change without notice,  
for the latest pricing please check our website

**[WWW.FORKLIFTKING.COM.AU](http://WWW.FORKLIFTKING.COM.AU)**

# OUR FORKLIFTS



**KING 20FL**



**KING 25FL**



**KING 35FL**



**KING 50FL**



**KING 50 C**



**KING 70FL**



**KING 35AT**

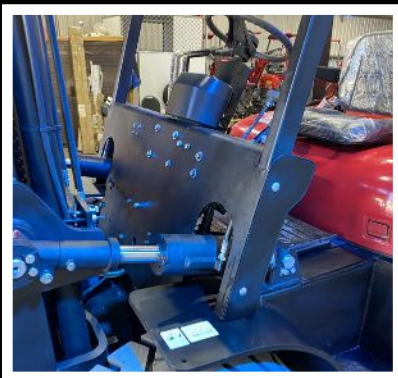
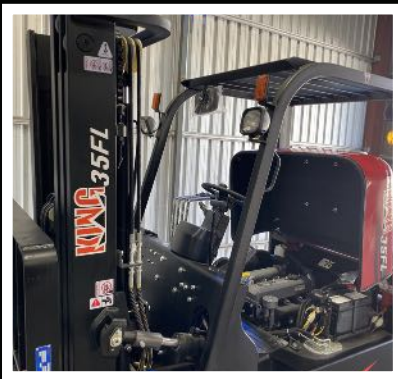


**KING 35 4WD**

\*Prices And Specifications May Change Without Notice\*

**TO TAKE THE NEXT STEP TODAY, CALL US ON 1300 192 700**

# GALLERY



# KING 20FL



**DIESEL ENGINE**

**Forklift King 2.0 Ton  
Affordable, Reliable and Cost  
Effective**

**BASED PACKAGE INCLUDING IMPLEMENTS**

**\$19,990** +GST

**FINANCE**

**\$99** PER WEEK

**Total weight 2.9 Ton, Dimensions 3195mm (L)  
x 1085mm (W) x 1995 mm (H)**

**OPTIONAL UPGRADE**

**Enclosed Cab with Air Conditioning \$4,990+GST**

\*Prices And Specifications May Change Without Notice\*

**TO TAKE THE NEXT STEP TODAY, CALL US ON 1300 192 700**

## PHOTO GALLERY



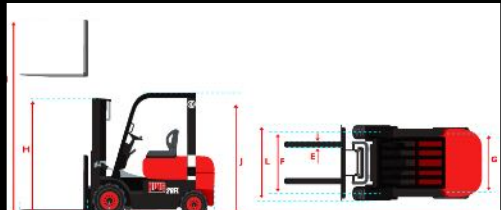
### 2.0 TON DIESEL FORKLIFT PACKAGE INCLUSIONS:

SIDESHIFT	MAX TRACTION (WITH/WITHOUT LOAD): 18/14 KN	DEDICATED AFTER-SALES HELP AND SUPPORT
2-STAGE MAST – MAX LIFTING HEIGHT 3M	TOTAL WEIGHT 2.91 TON	24 MONTHS MANUFACTURER'S WARRANTY
4-CYLINDER 40 HP DIESEL ENGINE	PNEUMATIC TYRES	
AUTO TRANSMISSION	COMFORTABLE ADJUSTABLE SEAT	
6-DEGREE TILT BACK AND FORWARD	INDICATORS AND REVERSE LIGHTS	
RATED SPEED 2600 RPM	OPERATION AND PARTS MANUALS	
FORK LENGTH 1.07M	AUSTRALIA WIDE DELIVERY AVAILABLE	
MAX DRIVING SPEED (WITH/WITHOUT LOAD): 14/14 KM/H	FINANCE AVAILABLE ON ALL MODELS AND PACKAGE OPTIONS	

### MACHINE SPECIFICATIONS

ENGINE		SPECIFICATIONS	
BRAND	XINCHAI	LOAD CAPACITY	2.0 TON
TRANSMISSION	AUTOMATIC	WEIGHT	2910 KG
FUEL TYPE	DIESEL	DIMENSIONS	3195MM (L) X 1085MM (W) X 1995MM (H)
RATED POWER	40 HP (30 KW)	FORK LENGTH	1070MM
CYLINDERS	4		
RATED SPEED	2600 RPM	<b>DIMENSIONS</b>	<b>MM</b>
FUEL TANK	65 L	OVERALL LENGTH (INCLUDING FORK)	3195
HYDRAULIC TANK	65 L	FRONT OVERHANG	430
RATED FLOW	75 L /MIN	WHEEL BASE	1450
<b>PERFORMANCE</b>		FORK LENGTH	1070
LIFTING CAPACITY	2000KG	FORK WIDTH	100
TOTAL WEIGHT	2910KG	FORK TREAD	890
MAX DRIVING SPEED (LOADED)	14.5 KM/H	REAR TREAD	920
MAX DRIVING SPEED (UNLOADED)	15 KM/H	OVERALL HEIGHT (MAST LOWERED)	1995
MAX LIFTING SPEED (LOADED)	400 MM/S	OVERALL HEIGHT (MAST RAISED)	4030
MAX TRACTION (LOADED)	18 KN	OVERALL GUARD HEIGHT	2085
MAX TRACTION (UNLOADED)	14 KN	FORK THICKNESS	35
TILT ANGLE FORWARD	6 DEGREES	OVERALL WIDTH	1085
TILT ANGLE BACKWARDS	12 DEGREES	LIFTING HEIGHT	3000
<b>TYRES</b>		FREE LIFTING HEIGHT	70
WHEEL BASE	1450MM	TURNING RADIUS	2200
FRONT TREAD	890MM		
REAR TREAD	920MM		
FRONT TYRE	6.50-10-10		
REAR TYRE	5.00-8-10		

### DIMENSIONS



DIMENSIONS	mm
A Overall length (including fork)	3195
B Front overhang	430
C Wheel base	1450
D Fork length	1070
E Fork width	100
F Front tread	890
G Rear tread	920
H Overall height (mast lowered)	1995
I Overall height (mast raised)	4030
J Overhead guard height	2085
K Fork thickness	35
L Overall width	1085
M Lifting height	3000
N Free lifting height	70
O Turning radius	2200

**SCAN THIS QR CODE TO WATCH THE FULL VIDEO TOUR**



# KING 25FL



**Forklift King 2.5 Ton Diesel Forklift Affordable And User Friendly.**

**DIESEL ENGINE**

**BASED PACKAGE INCLUDING IMPLEMENTS**

**\$21,990 +GST**

**FINANCE**

**\$109 PER WEEK**

**PREMIUM PACKAGE INCLUDING IMPLEMENTS**

**\$23,990 +GST**

**FINANCE**

**\$119 PER WEEK**

**Total weight 3.6 Ton, Dimensions 3605mm(L) x 1160mm (W) x 2095mm (H)**

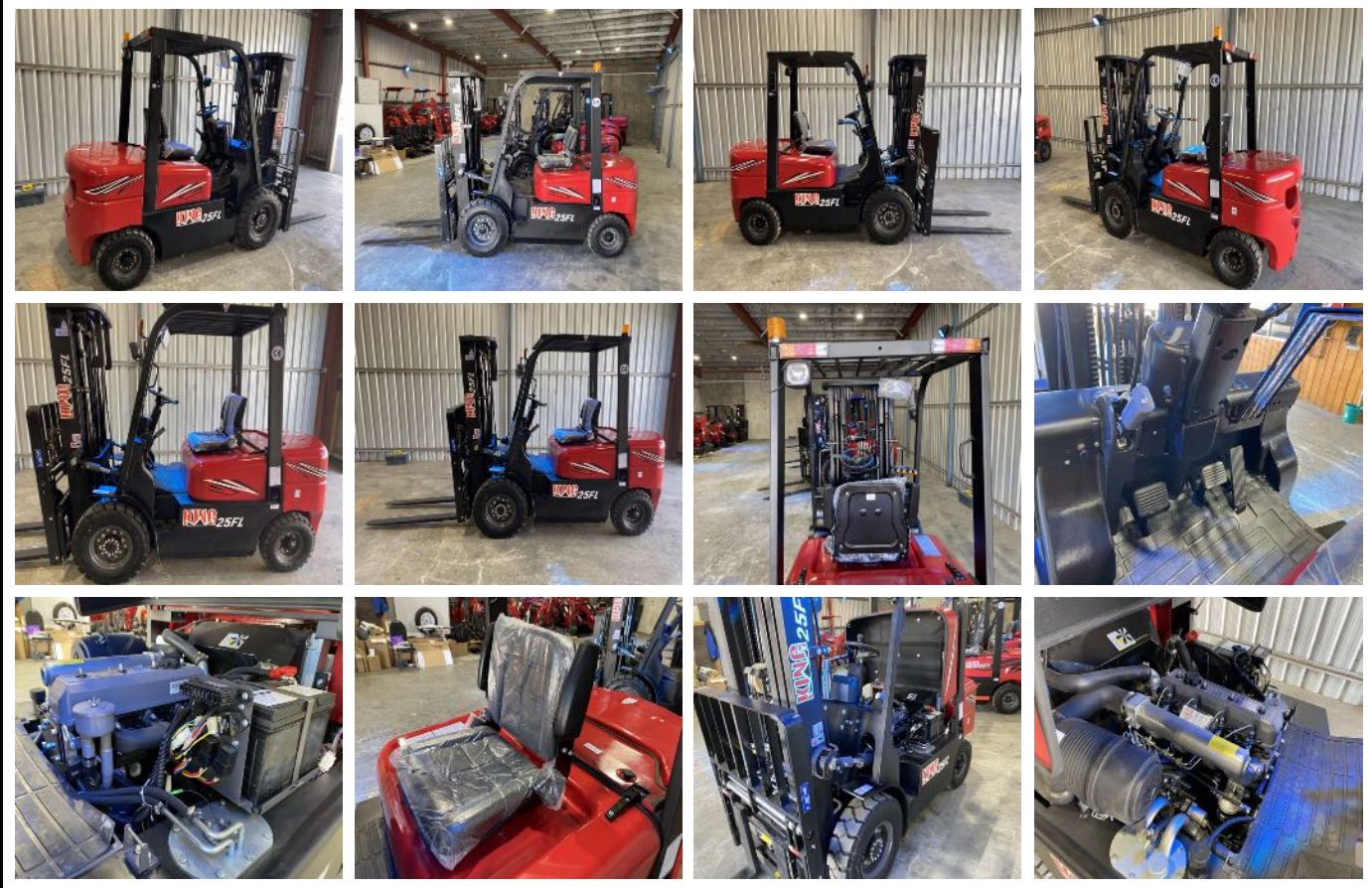
**OPTIONAL UPGRADE**

**Enclosed Cab with Air Conditioning \$4,990+GST**

\*Prices And Specifications May Change Without Notice\*

**TO TAKE THE NEXT STEP TODAY, CALL US ON 1300 192 700**

## PHOTO GALLERY



### PREMIUM 2.5 TON DIESEL FORKLIFT PACKAGE INCLUSIONS:

SIDESHIFT	MAX TRACTION (WITH/WITHOUT LOAD): 15/10 KN	DEDICATED AFTER-SALES HELP AND SUPPORT
3-STAGE MAST – MAX LIFTING HEIGHT 4.5M	TOTAL WEIGHT 3.6 TON	3-STAGE INSTEAD OF 2-STAGE MAST
ADJUSTABLE FORKS	PNEUMATIC TYRES	FINANCE AVAILABLE ON ALL MODELS & PACKAGE OPTIONS
4-CYLINDER 52 HP DIESEL ENGINE	COMFORTABLE ADJUSTABLE SEAT	24 MONTHS MANUFACTURER'S WARRANTY
AUTO TRANSMISSION	PREMIUM LIGHTING PACKAGE	
6-DEGREE TILT BACK AND FORWARD	OPERATION AND PARTS MANUALS	
RATED SPEED 2650 RPM	AUSTRALIA WIDE DELIVERY AVAILABLE	
FORK LENGTH 1.22M	MAX DRIVING SPEED (WITH/WITHOUT LOAD): 17/19 KM/H	

### MACHINE SPECIFICATIONS

ENGINE	SPECIFICATIONS	DIMENSIONS	
BRAND	XINCHAI	LOAD CAPACITY	2.5 TON
TRANSMISSION	AUTOMATIC	WEIGHT	3600 KG
FUEL TYPE	DIESEL	DIMENSIONS	3605MM (L) X 1160MM(W) X 2095MM (H)
RATED POWER	52 HP (39 KW)	FORK LENGTH	1220MM
CYLINDERS	4		
		DIMENSIONS	
RATED SPEED	2650 RPM	OVERALL LENGTH	3605 MM
FUEL TANK	65 L	FRONT OVERHANG	451 MM
HYDRAULIC TANK	65 L	WHEEL BASE	1640 MM
RATED FLOW	75 L /MIN	FORK LENGTH	1220 MM
PERFORMANCE		FORK WIDTH	122 MM
LIFTING CAPACITY	2500KG	FRONT TREAD	970 MM
TOTAL WEIGHT	3600KG	REAR TREAD	970 MM
MAX DRIVING SPEED (LOADED)	17 KM/H	OVERALL HEIGHT (MAST LOWERED)	2095 MM
MAX DRIVING SPEED (UNLOADED)	19 KM/H	OVERALL HEIGHT (MAST RAISED)	4080 MM
MAX LIFTING SPEED (LOADED)	400 MM/S	OVERALL HEIGHT (TO OVERHEAD GUARD)	2095 MM
MAX TRACTION (LOADED)	15 KN	FORK THICKNESS	40 MM
MAX TRACTION (UNLOADED)	10 KN	OVERALL WIDTH	1160 MM
TILT ANGLE FORWARD	6 DEGREES	LIFTING HEIGHT	3000 MM
TILT ANGLE BACKWARDS	6 DEGREES	FREE LIFTING HEIGHT	60 MM
TYRES		TURNING RADIUS	2450 MM
WHEEL BASE	1640MM		
FRONT TREAD	970MM		
REAR TREAD	970MM		
FRONT TYRE	7.00-12		
REAR TYRE	6.00-9		

### DIMENSIONS



**SCAN THIS  
QR CODE TO  
WATCH THE  
FULL VIDEO  
TOUR**



# KING 35FL



**DIESEL ENGINE**

**A perfect All-rounder, The Forklift King 3.5 Ton Does Not Disappoint!**

**BASED PACKAGE INCLUDING IMPLEMENTS**

**\$24,990** +GST

**FINANCE**

**\$129** PER WEEK

**PREMIUM PACKAGE INCLUDING IMPLEMENTS**

**\$26,990** +GST

**FINANCE**

**\$139** PER WEEK

**Total weight 4.58 Ton, Dimensions 3800mm(L) x 1230mm (W) x 2110 mm (H)**

**OPTIONAL UPGRADE**

**Enclosed Cab with Air Conditioning \$4,990+GST**

\*Prices And Specifications May Change Without Notice\*

**TO TAKE THE NEXT STEP TODAY, CALL US ON 1300 192 700**

## PHOTO GALLERY



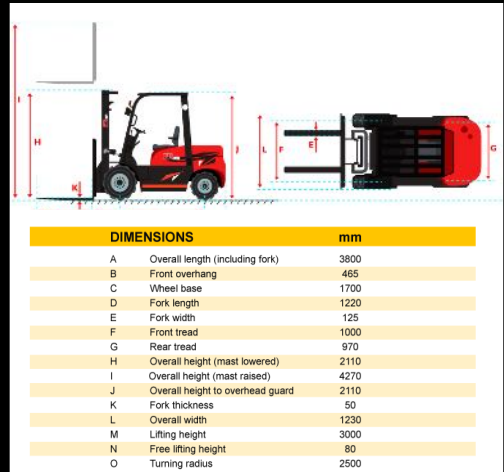
### PREMIUM 3.5 TON DIESEL FORKLIFT PACKAGE INCLUSIONS:

SIDESHIFT	MAX TRACTION (WITH/WITHOUT LOAD): 16/11 KN	AUSTRALIA WIDE DELIVERY AVAILABLE
3-STAGE MAST – MAX LIFTING HEIGHT 4.5M	TOTAL WEIGHT 4.58 TON	FINANCE AVAILABLE ON ALL MODELS & PACKAGE OPTIONS
ADJUSTABLE FORKS	PNEUMATIC TYRES	DEDICATED AFTER-SALES HELP AND SUPPORT
4-CYLINDER 54 HP DIESEL ENGINE	COMFORTABLE ADJUSTABLE SEAT	24 MONTHS MANUFACTURER'S WARRANTY
HYDRAULIC TRANSMISSION	PREMIUM LIGHTING PACKAGE	
6-DEGREE TILT FORWARD, 12 DEGREE TILT BACK	MAINTENANCE TOOLBOX KIT	
RATED SPEED 2650 RPM	OPERATION AND PARTS MANUALS	
FORK LENGTH 1.22M	MAX DRIVING SPEED (WITH/WITHOUT LOAD): 18/20 KM/H	

### MACHINE SPECIFICATIONS

ENGINE	SPECIFICATIONS
BRAND XINCHAI	LOAD CAPACITY 3.5 TON
TRANSMISSION HYDRAULIC	WEIGHT 4580 KG
FUEL TYPE DIESEL	DIMENSIONS 3800MM (L) X 1230MM (W) X 2110MM (H)
RATED POWER 54 HP (40 KW)	MACHINE LENGTH 2580MM
CYLINDERS 4	FORK LENGTH 1220 MM
RATED SPEED 2650 RPM	DIMENSIONS
FUEL TANK 70 L	OVERALL LENGTH 3800 MM
HYDRAULIC TANK 70 L	FRONT OVERHANG 465 MM
RATED FLOW 80 L /MIN	WHEEL BASE 1700 MM
PERFORMANCE	FORK LENGTH 1220 MM
LIFTING CAPACITY 3500KG	FORK WIDTH 125 MM
TOTAL WEIGHT 4580KG	FRONT TREAD 1000 MM
MAX DRIVING SPEED (LOADED) 17 KM/H	REAR TREAD 970 MM
MAX DRIVING SPEED (UNLOADED) 19 KM/H	OVERALL HEIGHT (MAST LOWERED) 2110 MM
MAX LIFTING SPEED (LOADED) 375 MM/S	OVERALL HEIGHT (MAST RAISED) 4270 MM
MAX TRACTION (LOADED) 16 KN	OVERALL HEIGHT (TO OVERHEAD GUARD) 2110 MM
MAX TRACTION (UNLOADED) 11 KN	FORK THICKNESS 50 MM
TILT ANGLE FORWARD 6 DEGREES	OVERALL WIDTH 1230 MM
TILT ANGLE BACKWARDS 12 DEGREES	LIFTING HEIGHT 3000 MM
TYRES	FREE LIFTING HEIGHT 80 MM
WHEEL BASE 1700MM	TURNING RADIUS 2500 MM
FRONT TREAD 1000MM	
REAR TREAD 970MM	
FRONT TYRE 28X9-15	
REAR TYRE 6.50-10	

### DIMENSIONS



**SCAN THIS QR CODE TO WATCH THE FULL VIDEO TOUR**



# KING 50FL



**DIESEL ENGINE**

**Our MASSIVE 5.0 Ton Model Has The Power You Need To Move Anything.**

**BASED PACKAGE INCLUDING IMPLEMENTS**

**\$37,990** +GST

**FINANCE**

**\$189** PER WEEK

**PREMIUM PACKAGE INCLUDING IMPLEMENTS**

**\$39,990** +GST

**FINANCE**

**\$199** PER WEEK

**Total weight 6.8 Ton, Dimensions 4350mm(L) x 1400mm (W) x 2330 mm (H)**

**OPTIONAL UPGRADE**

**Enclosed Cab with Air Conditioning \$4,990+GST**

\*Prices And Specifications May Change Without Notice\*

**TO TAKE THE NEXT STEP TODAY, CALL US ON 1300 192 700**

## PHOTO GALLERY



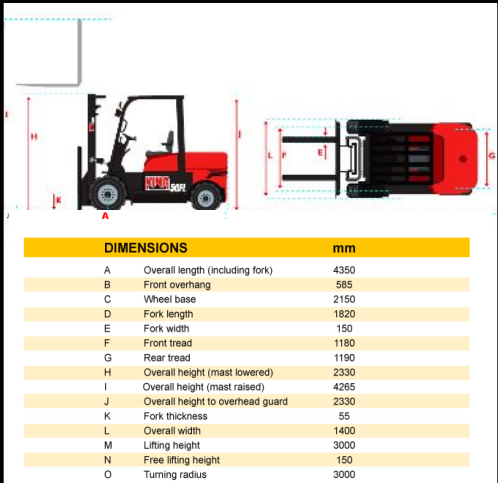
### PREMIUM 5.0 TON DIESEL FORKLIFT PACKAGE INCLUSIONS:

<b>SIDESHIFT</b>	<b>MAX TRACTION (WITH/WITHOUT LOAD): 31/18KN</b>	<b>DEDICATED AFTER-SALES HELP AND SUPPORT</b>
<b>3-STAGE MAST – MAX LIFTING HEIGHT 4.5M</b>	<b>TOTAL WEIGHT 6.8 TON</b>	<b>FINANCE AVAILABLE ON ALL MODELS &amp; PACKAGE OPTIONS</b>
<b>ADJUSTABLE FORKS</b>	<b>PNEUMATIC TYRES</b>	<b>24 MONTHS MANUFACTURER'S WARRANTY</b>
<b>4-CYLINDER 84 HP DIESEL ENGINE</b>	<b>COMFORTABLE ADJUSTABLE SEAT</b>	
<b>HYDRAULIC TRANSMISSION</b>	<b>PREMIUM LIGHTING PACKAGE</b>	
<b>6-DEGREE TILT FORWARD, 12 DEGREE TILT BACK</b>	<b>OPERATION AND PARTS MANUALS</b>	
<b>RATED SPEED 2200RPM</b>	<b>AUSTRALIA WIDE DELIVERY AVAILABLE</b>	
<b>FORK LENGTH 1.22M</b>	<b>MAX DRIVING SPEED (WITH/WITHOUT LOAD): 20/24 KM/H</b>	

### MACHINE SPECIFICATIONS

ENGINE		SPECIFICATIONS	
BRAND	QUANCHAI	LOAD CAPACITY	5.0 TON
TRANSMISSION	HYDRAULIC	WEIGHT	6800 KG
FUEL TYPE	DIESEL	DIMENSIONS	4350MM (L) X 1400MM(W) X 2330MM (H)
RATED POWER	84 HP (62.5 KW)	MACHINE LENGTH	3130MM
CYLINDERS	4	FORK LENGTH	1220MM
RATED SPEED	2200 RPM	<b>DIMENSIONS</b>	
FUEL TANK	100 L	OVERALL LENGTH	4350 MM
HYDRAULIC TANK	120 L	FRONT OVERHANG	585 MM
RATED FLOW	105 L /MIN	WHEEL BASE	2150 MM
<b>PERFORMANCE</b>		FORK LENGTH	1820 MM
LIFTING CAPACITY	5000KG	FORK WIDTH	150 MM
TOTAL WEIGHT	6800KG	FRONT TREAD	1180 MM
MAX DRIVING SPEED (LOADED)	20 KM/H	REAR TREAD	1190 MM
MAX DRIVING SPEED (UNLOADED)	24 KM/H	OVERALL HEIGHT (MAST LOWERED)	2330 MM
MAX LIFTING SPEED (LOADED)	375 MM/S	OVERALL HEIGHT (MAST RAISED)	4265 MM
MAX TRACTION (LOADED)	31 KN	OVERALL HEIGHT (TO OVERHEAD GUARD)	2330 MM
MAX TRACTION (UNLOADED)	18 KN	FORK THICKNESS	55 MM
TILT ANGLE FORWARD	6 DEGREES	OVERALL WIDTH	1400 MM
TILT ANGLE BACKWARDS	12 DEGREES	LIFTING HEIGHT	3000 MM
<b>TYRES</b>		FREE LIFTING HEIGHT	150 MM
WHEEL BASE	2150MM	TURNING RADIUS	3000 MM
FRONT TREAD	1180MM		
REAR TREAD	1190MM		
FRONT TYRE	300-15		
REAR TYRE	7.00-12		

### DIMENSIONS



**SCAN THIS QR CODE TO WATCH THE FULL VIDEO TOUR**



# KING 50C



**DIESEL ENGINE**

## High-Performance 5.0C Forklift – Built for Heavy Loads & Durability

**BASED PACKAGE INCLUDING IMPLEMENTS**

**\$42,990** +GST

**FINANCE**

**\$209** PER WEEK

**PREMIUM PACKAGE INCLUDING IMPLEMENTS**

**\$44,990** +GST

**FINANCE**

**\$229** PER WEEK

**Total weight 6.8 Ton, Dimensions 4350mm(L)  
x 1400mm (W) x 2330 mm (H)**

\*Prices And Specifications May Change Without Notice\*

**TO TAKE THE NEXT STEP TODAY, CALL US ON 1300 192 700**

## PHOTO GALLERY



### PREMIUM 5.0 TON DIESEL FORKLIFT PACKAGE INCLUSIONS:

SIDESHIFT	MAX TRACTION (WITH/WITHOUT LOAD): 31/18KN	DEDICATED AFTER-SALES HELP AND SUPPORT
3-STAGE MAST – MAX LIFTING HEIGHT 4.5M	TOTAL WEIGHT 6.8 TON	FINANCE AVAILABLE ON ALL MODELS & PACKAGE OPTIONS
ADJUSTABLE FORKS	PNEUMATIC TYRES	24 MONTHS MANUFACTURER'S WARRANTY
4-CYLINDER 84 HP DIESEL ENGINE	COMFORTABLE ADJUSTABLE SEAT	
HYDRAULIC TRANSMISSION	PREMIUM LIGHTING PACKAGE	
6-DEGREE TILT FORWARD, 12 DEGREE TILT BACK	OPERATION AND PARTS MANUALS	
RATED SPEED 2200RPM	AUSTRALIA WIDE DELIVERY AVAILABLE	
FORK LENGTH 1.22M	MAX DRIVING SPEED (WITH/WITHOUT LOAD): 20/24 KM/H	

### MACHINE SPECIFICATIONS

ENGINE	SPECIFICATIONS
BRAND	QUANCHAI
TRANSMISSION	HYDRAULIC
FUEL TYPE	DIESEL
RATED POWER	84 HP (62.5 KW)
CYLINDERS	4
RATED SPEED	2200 RPM
FUEL TANK	100 L
HYDRAULIC TANK	120 L
RATED FLOW	105 L /MIN
PERFORMANCE	DIMENSIONS
LIFTING CAPACITY	5000KG
TOTAL WEIGHT	6800KG
MAX DRIVING SPEED (LOADED)	20 KM/H
MAX DRIVING SPEED (UNLOADED)	24 KM/H
MAX LIFTING SPEED (LOADED)	375 MM/S
MAX TRACTION (LOADED)	31 KN
MAX TRACTION (UNLOADED)	18 KN
TILT ANGLE FORWARD	6 DEGREES
TILT ANGLE BACKWARDS	12 DEGREES
TYRES	
WHEEL BASE	2150MM
FRONT TREAD	1180MM
REAR TREAD	1190MM
FRONT TYRE	300-15
REAR TYRE	7.00-12
LOAD CAPACITY	5.0 TON
WEIGHT	6800 KG
DIMENSIONS	4350MM (L) X 1400MM(W) X 2330MM (H)
MACHINE LENGTH	3130MM
FORK LENGTH	1220MM
OVERALL LENGTH	4350 MM
FRONT OVERHANG	585 MM
WHEEL BASE	2150 MM
FORK LENGTH	1820 MM
FORK WIDTH	150 MM
FRONT TREAD	1180 MM
REAR TREAD	1190 MM
OVERALL HEIGHT (MAST LOWERED)	2330 MM
OVERALL HEIGHT (MAST RAISED)	4265 MM
OVERALL HEIGHT (TO OVERHEAD GUARD)	2330 MM
FORK THICKNESS	55 MM
OVERALL WIDTH	1400 MM
LIFTING HEIGHT	3000 MM
FREE LIFTING HEIGHT	150 MM
TURNING RADIUS	3000 MM

### DIMENSIONS



**SCAN THIS  
QR CODE TO  
WATCH THE  
FULL VIDEO  
TOUR**



# KING 70FL



**DIESEL ENGINE**

## The Heavy Duty Monster Forklift

**BASED PACKAGE INCLUDING IMPLEMENTS**

**\$57,990** +GST

**FINANCE**

**\$289** PER WEEK

**PREMIUM PACKAGE INCLUDING IMPLEMENTS**

**\$59,990** +GST

**FINANCE**

**\$299** PER WEEK

**Total weight 9.5 Ton, Dimensions 4240mm (L)  
x 1995mm (W) x 2500 mm (H)**

**OPTIONAL UPGRADE**

**Enclosed Cab with Air Conditioning \$4,990+GST**

\*Prices And Specifications May Change Without Notice\*

**TO TAKE THE NEXT STEP TODAY, CALL US ON 1300 192 700**

## PHOTO GALLERY



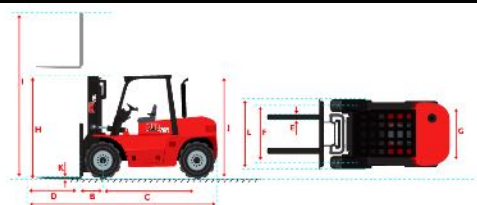
### PREMIUM 7.0 TON DIESEL FORKLIFT PACKAGE INCLUSIONS:

<b>SIDESHIFT</b>	<b>MAX TRACTION (WITH/WITHOUT LOAD): 31/18 KN</b>	<b>DEDICATED AFTER-SALES HELP AND SUPPORT</b>
<b>3-STAGE MAST – MAX LIFTING HEIGHT 4.5M</b>	<b>TOTAL WEIGHT 9.5 TON</b>	<b>FINANCE AVAILABLE ON ALL MODELS &amp; PACKAGE OPTIONS</b>
<b>ADJUSTABLE FORKS</b>	<b>SOLID TYRES</b>	<b>24 MONTHS MANUFACTURER'S WARRANTY</b>
<b>6-CYLINDER 114 HP DIESEL ENGINE</b>	<b>COMFORTABLE ADJUSTABLE SEAT</b>	
<b>HYDRAULIC TRANSMISSION</b>	<b>PREMIUM LIGHTING PACKAGE</b>	
<b>6-DEGREE TILT FORWARD, 12 DEGREE TILT BACK</b>	<b>OPERATION AND PARTS MANUALS</b>	
<b>RATED SPEED 2200RPM</b>	<b>AUSTRALIA WIDE DELIVERY AVAILABLE</b>	
<b>FORK LENGTH 1.22M</b>	<b>MAX DRIVING SPEED (WITH/WITHOUT LOAD): 21/23 KM/H</b>	

### MACHINE SPECIFICATIONS

ENGINE		SPECIFICATIONS	
BRAND	QUANCHAI	LOAD CAPACITY	7.0 TON
TRANSMISSION	HYDRAULIC	WEIGHT	9500 KG
FUEL TYPE	DIESEL	DIMENSIONS	4240MM (L) X 1995MM(W) X 2500MM (H)
RATED POWER	114 HP (85 KW)	MACHINE LENGTH	4850MM
CYLINDERS	6	FORK LENGTH	1220MM
RATED SPEED	2200 RPM	<b>SPECIFICATIONS</b>	<b>MM</b>
FUEL TANK	100 L	OVERALL LENGTH ( INCLUDING FORK )	4850
HYDRAULIC TANK	120 L	FRONT OVERHANG	610
RATED FLOW	105 L /MIN	WHEEL BASE	2250
<b>PERFORMANCE</b>		FORK LENGTH	1220
LIFTING CAPACITY	7000KG	FORK WIDTH	150
TOTAL WEIGHT	9500KG	FRONT TREAD	1470
MAX DRIVING SPEED (LOADED)	21 KM/H	REAR TREAD	1700
MAX DRIVING SPEED (UNLOADED)	23 KM/H	OVERALL HEIGHT ( MAST LOWERED )	2500
MAX LIFTING SPEED (LOADED)	450 MM/S	OVERALL HEIGHT ( MAST RAISED )	4420
MAX TRACTION (LOADED)	31 KN	OVERHEAD GUARD HEIGHT	2420
MAX TRACTION (UNLOADED)	18 KN	FORK THICKNESS	65
TILT ANGLE FORWARD	6 DEGREES	OVERALL WIDTH	1995
TILT ANGLE BACKWARDS	12 DEGREES	LIFTING HEIGHT	3000
<b>TYRES</b>		FREE LIFTING HEIGHT	150
WHEEL BASE	2250MM	TURNING RADIUS	3450
FRONT TREAD	1470MM		
REAR TREAD	1700MM		
FRONT TYRE	8.25-15-14		
REAR TYRE	8.25-15-14		

### DIMENSIONS



DIMENSIONS	mm	
A	Overall length (including fork)	4850
B	Front overhang	610
C	Wheel base	2250
D	Fork length	1220
E	Fork width	150
F	Front tread	1470
G	Rear tread	1700
H	Overall height (mast lowered)	2500
I	Overall height (mast raised)	4420
J	Overhead guard height	2420
K	Fork thickness	65
L	Overall width	1995
M	Lifting height	3000
N	Free lifting height	150
O	Turning radius	3450

**SCAN THIS  
QR CODE TO  
WATCH THE  
FULL VIDEO  
TOUR**



# KING 35AT



**Need Something More Sturdy Than A Standard Forklift, The AT Model Might Be The One For You.**

**DIESEL ENGINE**

**BASED PACKAGE INCLUDING IMPLEMENTS**

**\$32,990** +GST

**FINANCE**

**\$159** PER WEEK

**PREMIUM PACKAGE INCLUDING IMPLEMENTS**

**\$34,990** +GST

**FINANCE**

**\$169** PER WEEK

**Total weight 4.9 Ton, Dimensions 4260mm(L) x 1620mm (W) x 2320 mm (H)**

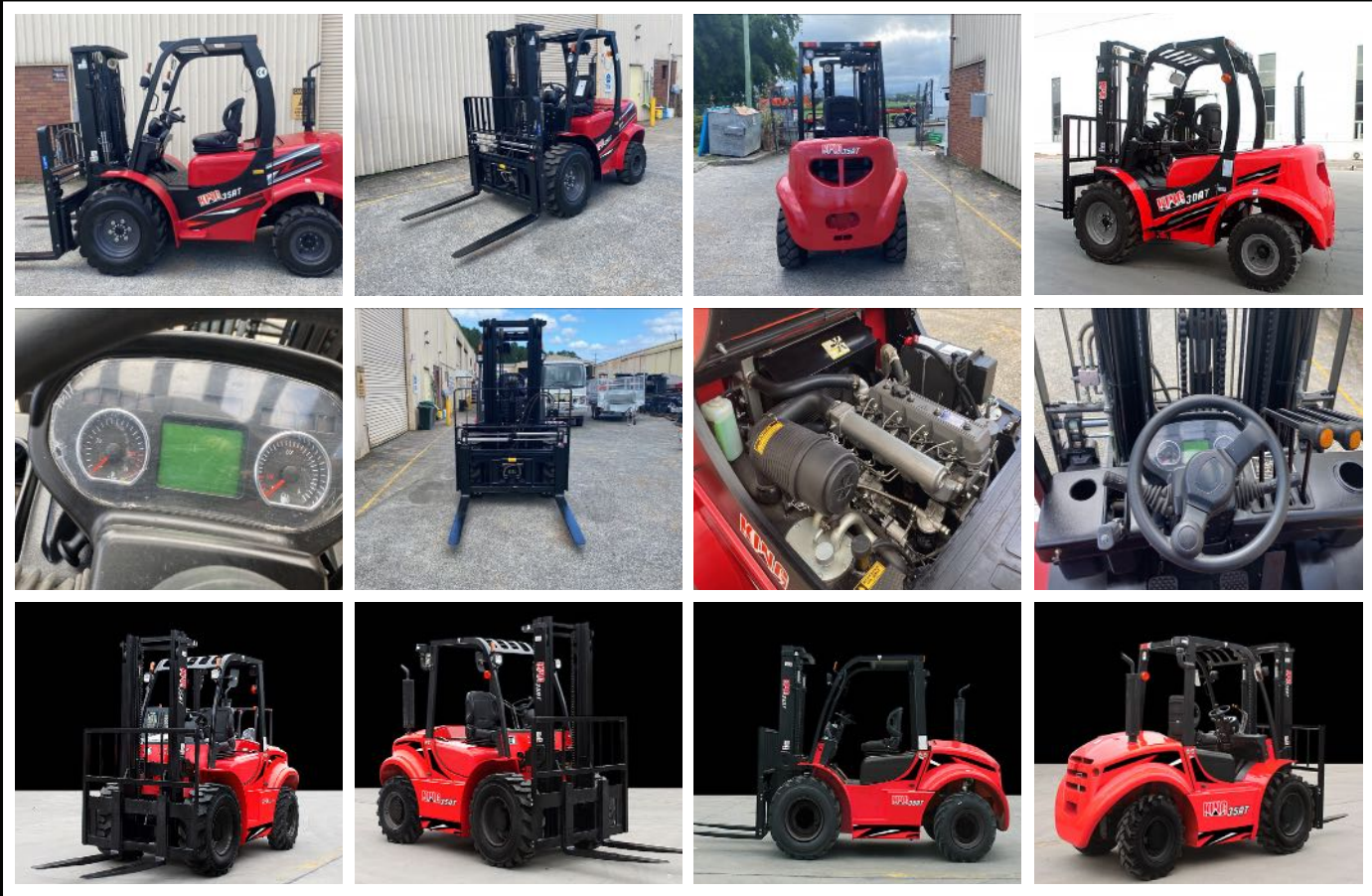
**OPTIONAL UPGRADE**

**Enclosed Cab with Air Conditioning \$4,990+GST**

\*Prices And Specifications May Change Without Notice\*

**TO TAKE THE NEXT STEP TODAY, CALL US ON 1300 192 700**

## PHOTO GALLERY



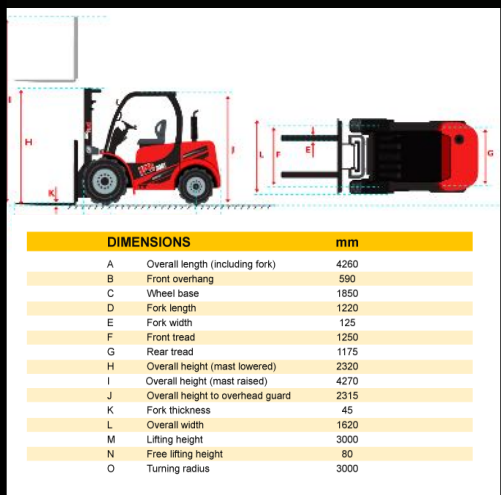
### PREMIUM 3.5 TON ALL TERRAIN DIESEL FORKLIFT PACKAGE INCLUSIONS:

<b>SIDESHIFT</b>	<b>TOTAL WEIGHT 4.7 TON</b>	<b>FINANCE AVAILABLE ON ALL MODELS &amp; PACKAGE OPTIONS</b>
3-STAGE MAST – MAX LIFTING HEIGHT 4.5M	PNEUMATIC TYRES	24 MONTHS MANUFACTURER'S WARRANTY
ADJUSTABLE FORKS	COMFORTABLE ADJUSTABLE SEAT	
4-CYLINDER 64 HP DIESEL ENGINE	PREMIUM LIGHTING PACKAGE	
HYDRAULIC TRANSMISSION	OPERATION AND PARTS MANUALS	
6-DEGREE TILT FORWARD, 12 DEGREE TILT BACK	AUSTRALIA WIDE DELIVERY AVAILABLE	
RATED SPEED 2500 RPM	MAX DRIVING SPEED (WITH/WITHOUT LOAD): 21/21 KM/H	
FORK LENGTH 1.22M	DEDICATED AFTER-SALES HELP AND SUPPORT	

### MACHINE SPECIFICATIONS

ENGINE		SPECIFICATIONS	
BRAND	XINCHAI	LOAD CAPACITY	3.5 TON
TRANSMISSION	HYDRAULIC	WEIGHT	4950 KG
FUEL TYPE	DIESEL	DIMENSIONS INC FORKS	4260MM (L) X 1620MM(W) X 2320MM (H)
RATED POWER	64 HP (48 KW)	MACHINE LENGTH	3040MM
CYLINDERS	4	FORK LENGTH	1220MM
RATED SPEED	2300 RPM	<b>DIMENSIONS</b>	
FUEL TANK	65 L	OVERALL LENGTH	4260 MM
HYDRAULIC TANK	65 L	FRONT OVERHANG	590 MM
RATED FLOW	80 L / MIN	WHEEL BASE	1850 MM
<b>PERFORMANCE</b>		FORK LENGTH	1220 MM
LIFTING CAPACITY	3500KG	FORK WIDTH	125 MM
TOTAL WEIGHT	4950KG	FRONT TREAD	1250 MM
MAX DRIVING SPEED (LOADED)	23 KM/H	REAR TREAD	1175 MM
MAX DRIVING SPEED (UNLOADED)	23 KM/H	OVERALL HEIGHT (MAST LOWERED)	2320 MM
MAX LIFTING SPEED (LOADED)	440 MM/S	OVERALL HEIGHT (MAST RAISED)	4270 MM
TILT ANGLE FORWARD	6 DEGREES	OVERALL HEIGHT (TO OVERHEAD GUARD)	2315 MM
TILT ANGLE BACKWARDS	12 DEGREES	FORK THICKNESS	45 MM
<b>TYRES</b>		OVERALL WIDTH	1620 MM
WHEEL BASE	1850MM	LIFTING HEIGHT	3000 MM
FRONT TREAD	1250MM	FREE LIFTING HEIGHT	80 MM
REAR TREAD	1175MM	TURNING RADIUS	3000 MM
FRONT TYRE	14-17.5-14		
REAR TYRE	27*10-12		

### DIMENSIONS



**SCAN THIS QR CODE TO WATCH THE FULL VIDEO TOUR**



# KING 35 4WD



**DIESEL ENGINE**

**Our 3.5 Ton 4WD Can Do All Of That With Ease. At 60 HP, You've Got The Power You Need.**

**BASED PACKAGE INCLUDING IMPLEMENTS**

**\$45,990** +GST

**FINANCE**

**\$229** PER WEEK

**PREMIUM PACKAGE INCLUDING IMPLEMENTS**

**\$47,990** +GST

**FINANCE**

**\$239** PER WEEK

**Total weight 6.6 Ton, Dimensions 4435mm(L) x 1600mm (W) x 2320 mm (H)**

**OPTIONAL UPGRADE**

**Enclosed Cab with Air Conditioning \$4,990+GST**

\*Prices And Specifications May Change Without Notice\*

**TO TAKE THE NEXT STEP TODAY, CALL US ON 1300 192 700**

## PHOTO GALLERY



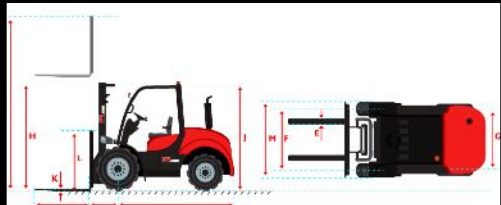
### PREMIUM 3.5 4WD TON DIESEL FORKLIFT PACKAGE INCLUSIONS:

SIDESHIFT	TOTAL WEIGHT 6.6 TON	DEDICATED AFTER-SALES HELP AND SUPPORT
3-STAGE MAST – MAX LIFTING HEIGHT 4.5M	PNEUMATIC TYRES	FINANCE AVAILABLE ON ALL MODELS & PACKAGE OPTIONS
ADJUSTABLE FORKS	COMFORTABLE ADJUSTABLE SEAT	24 MONTHS MANUFACTURER'S WARRANTY
4-CYLINDER 60 HP DIESEL ENGINE	PREMIUM LIGHTING PACKAGE	
HYDRAULIC TRANSMISSION	OPERATION AND PARTS MANUALS	
8-DEGREE TILT FORWARD, 12 DEGREE TILT BACK	AUSTRALIA WIDE DELIVERY AVAILABLE	
RATED SPEED 2500 RPM	MAX DRIVING SPEED (WITH/WITHOUT LOAD): 18/20 KM/H	
FORK LENGTH 1.22M		

### MACHINE SPECIFICATIONS

ENGINE	SPECIFICATIONS
BRAND	XINCHAI
TRANSMISSION	HYDRAULIC
FUEL TYPE	DIESEL
RATED POWER	60 HP (45 KW)
CYLINDERS	4
RATED SPEED	2500 RPM
FUEL TANK	95 L
HYDRAULIC TANK	95 L
RATED FLOW	90 L / MIN
PERFORMANCE	
LIFTING CAPACITY	3500KG
TOTAL WEIGHT	6600KG
MAX DRIVING SPEED (LOADED)	18 KM/H
MAX DRIVING SPEED (UNLOADED)	19.8 KM/H
MAX LIFTING SPEED (LOADED)	440 MM/S
TILT ANGLE FORWARD	8 DEGREES
TILT ANGLE BACKWARDS	12 DEGREES
TYRES	
WHEEL BASE	1980MM
FRONT TREAD	1250MM
REAR TREAD	1200MM
FRONT TYRE	14-17.5
REAR TYRE	10.0/75-15.3
LOAD CAPACITY	3.5 TON
WEIGHT	6600 KG
DIMENSIONS	4435MM (L) X 1600MM(W) X 2320MM (H)
MACHINE LENGTH	3215MM
FORK LENGTH	1220MM
DIMENSIONS	
OVERALL LENGTH	4435 MM
FRONT OVERHANG	598 MM
WHEEL BASE	1980 MM
FORK LENGTH	1220 MM
FORK WIDTH	125 MM
FRONT TREAD	1250 MM
REAR TREAD	1200 MM
OVERALL HEIGHT (MAST LOWERED)	2320 MM
OVERALL HEIGHT (MAST RAISED)	4270 MM
OVERALL HEIGHT (TO OVERHEAD GUARD)	2260 MM
FORK THICKNESS	45 MM
BACKREST HEIGHT	1230 MM
OVERALL WIDTH	1600 MM
FREE LIFTING HEIGHT	60 MM
MIN. TURNING RADIUS	3250 MM
MIN. UNDER CLEARANCE	230 MM

### DIMENSIONS



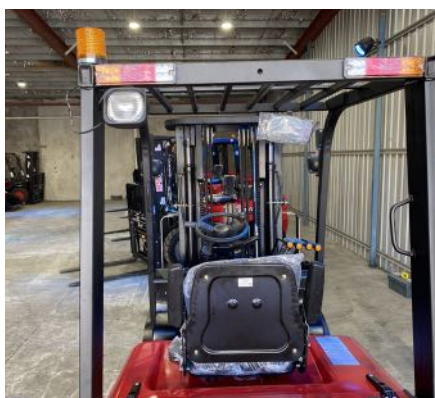
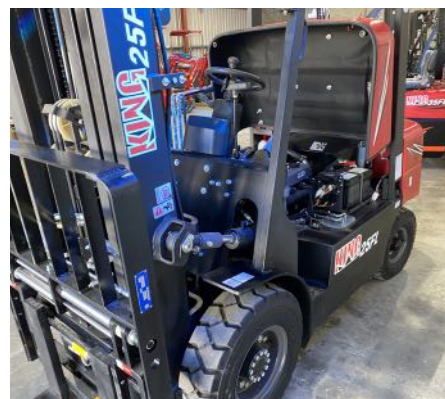
DIMENSIONS	mm	
A	Overall length (including fork)	4435
B	Front overhang	598
C	Wheel base	1980
D	Fork length	1220
E	Fork width	125
F	Front tread	1250
G	Rear tread	1200
H	Overall height (mast lowered)	2320
I	Overall height (mast raised)	4270
J	Overall height to overhead guard	2260
K	Fork thickness	45
L	Backrest height	1230
M	Overall width	1600
N	Min. Turning radius	3250
O	Min. under clearance	230

**SCAN THIS  
QR CODE TO  
WATCH THE  
FULL VIDEO  
TOUR**



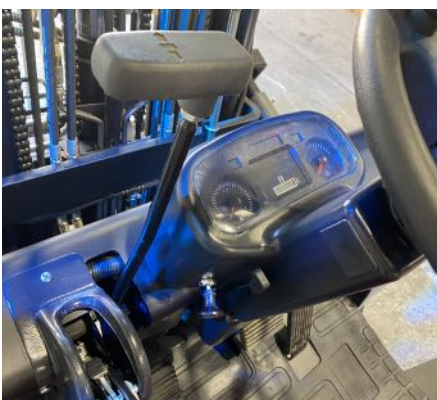
# PHOTO GALLERY

## KING 25 FL



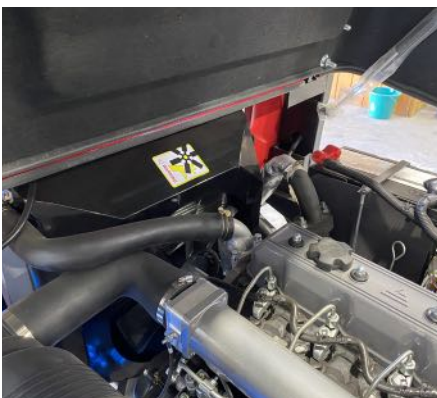
# PHOTO GALLERY

## KING 25 FL



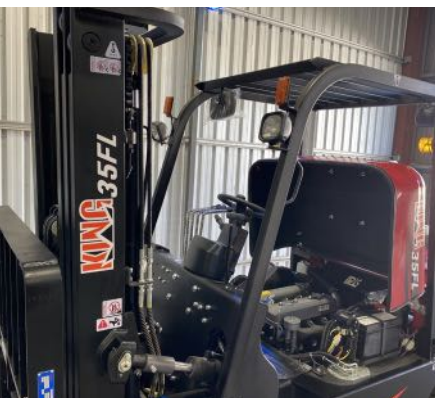
# PHOTO GALLERY

## KING 35 FL



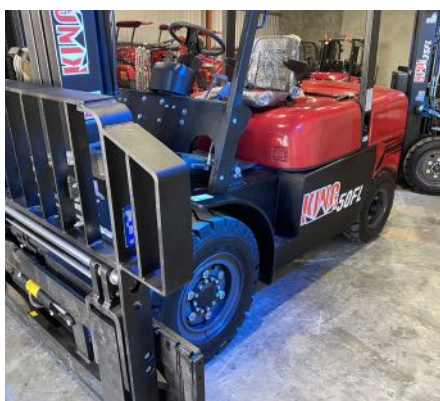
# PHOTO GALLERY

## KING 35 FL



# PHOTO GALLERY

## KING 50 FL



# PHOTO GALLERY

## KING 50 FL



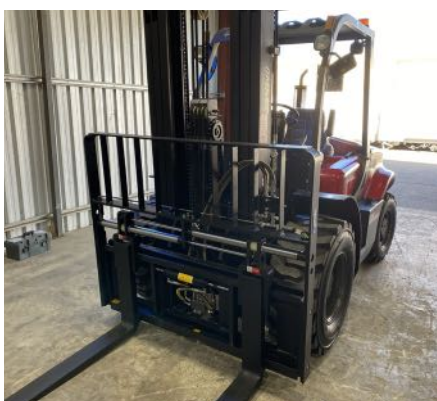
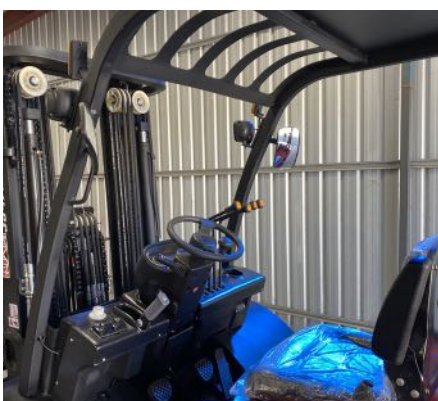
# PHOTO GALLERY

## KING 35 4WD



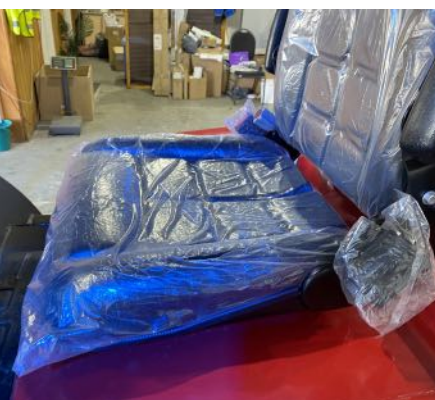
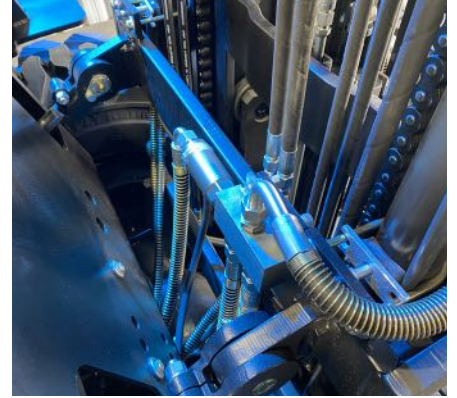
# PHOTO GALLERY

## KING 35 4WD



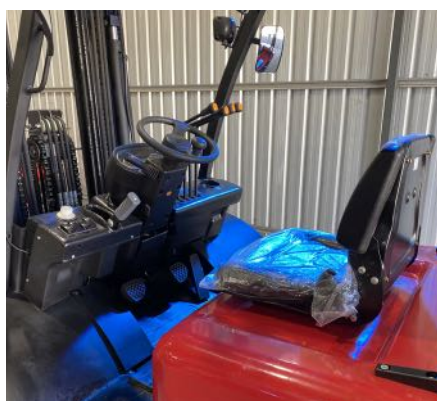
# PHOTO GALLERY

## KING 35 4WD



# PHOTO GALLERY

## KING 35 4WD



# WARRANTY AND GUARANTEE

## FORKLIFT KING TRIPLE WARRANTY AND GUARANTEE

### GUARANTEE #1

You are fully supported and backed up with our 24-month manufacturer's warranty, meaning if in the unlikely event your machine breaks down during the first 24 months you have it, we will supply the parts and technical support to allow you to get your machine operational again. This might mean talking to our technicians over the phone to help guide you through parts replacement, watching instruction videos or following written instructions in your service manual. We will work with you to get you sorted asap.

### GUARANTEE #2

2 years parts warranty from the date of purchase. If you have any issue with your machine outside of normal wear and tear items, we will supply parts to you so you can quickly and easily replace and keep the machine operational.

### GUARANTEE #3

No hassles after sales service. If, in the unlikely event you have a problem with your machine, we are only a phone call away. 99.9% of the time we will get back to you the same day, even on weekends; we know your machine is important to you.

## Warranty And Guarantee Certificate

### FORKLIFT KING TRIPLE WARRANTY AND GUARANTEE

#### GUARANTEE 1

You are fully supported and backed up with our 24-month manufacturer's warranty, meaning if in the unlikely event your machine breaks down during the first 24 months you have it, we will supply the parts and technical support to allow you to get your machine operational again. This might mean talking to our technicians over the phone to help guide you through parts replacement, watching instruction videos or following written instructions in your service manual. We will work with you to get you sorted asap.

#### GUARANTEE 2

2 years parts warranty from the date of purchase. If you have any issue with your machine outside of normal wear and tear items, we will supply parts to you so you can quickly and easily replace and keep the machine operational.

#### GUARANTEE 3

No hassles after sales service. If, in the unlikely event you have a problem with your machine, we are only a phone call away. 99.9% of the time we will get back to you the same day, even on weekends; we know your machine is important to you.



[www.forkliftking.com.au](http://www.forkliftking.com.au)



**TO TAKE THE NEXT STEP TODAY, CALL US ON 1300 192 700**

# FREQUENTLY ASKED QUESTIONS



**KING 20FL**



**KING 25FL**



**KING 35FL**



**KING 50FL**



**KING 70FL**



**KING 35AT**



**KING 35 4WD**

# FREQUENTLY ASKED QUESTIONS



**KING 20FL**



**KING 25FL**



**KING 35FL**



**KING 50FL**



**KING 70FL**



**KING 35AT**



**KING 35 4WD**

**TO TAKE THE NEXT STEP TODAY, CALL US ON 1300 192 700**

- Q1 ARE THE FORKLIFTS IN STOCK?**
- Q2 DO YOU HAVE A SHOWROOM I CAN COME TO SEE THE FORKLIFTS?**
- Q3 HOW LONG WILL IT TAKE FOR DELIVERY?**
- Q4 CAN I PICK IT UP MYSELF?**
- Q5 WHERE DO YOU DELIVER TO?**
- Q6 WHAT IS THE DELIVERY COST?**
- Q7 HOW MUCH DEPOSIT DO I HAVE TO PAY?**
- Q8 HOW LONG DOES FINANCE TAKE?**

## QUESTION #1

---

**ARE THE  
FORKLIFTS IN  
STOCK?**

---

### ANSWER

We have changing stock at the factory all the time, if you're looking for an in-stock model, email us at [office@forkliftking.com.au](mailto:office@forkliftking.com.au) or give us a call on **1300 192 700** and we can let you know which models we have in stock ready to go.



## QUESTION #2

---

**DO YOU HAVE A  
SHOWROOM I CAN  
COME TO SEE THE  
FORKLIFTS?**

---

### ANSWER

Our factory and display is **103-109 Quarry Road, South Murwillumbah NSW**. We are open Mon-Fri 8-4pm and can often organise a viewing Saturday mornings by prior arrangement.

Delivery Australia wide from our factory is super easy, we offer delivery for all of our forklifts.



## QUESTION #3

---

### HOW LONG WILL IT TAKE FOR DELIVERY?

---

#### ANSWER

Delivery is always fairly fast, this does depend on your physical location and the model you order.

All our forklifts are tested and have an extensive pre delivery check completed prior to shipping to ensure your forklift is delivered in top working order.



## QUESTION #4

---

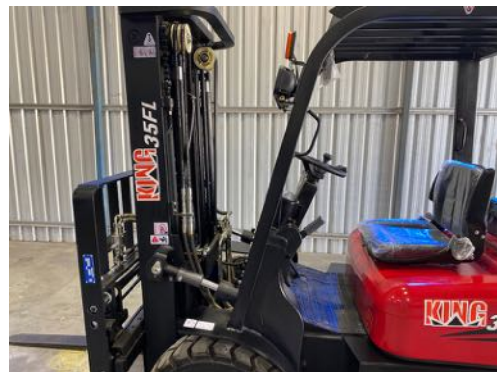
### CAN I PICK IT UP MYSELF?

---

#### ANSWER

Yes, lots of people collect their forklift directly from our factory, [103-109 Quarry Road, South Murwillumbah NSW.](#)

You're more than welcome to pick up your forklift yourself and get a run down face to face. We are open Mon- Fri 8-4pm.



## QUESTION #5

---

### WHERE DO YOU DELIVER TO?

#### ANSWER

Delivery is simple and easy, no matter where you're located in Australia. We only use select carriers that have specialised trucks set up to allow unloading without the need of a forklift on site. Please send us an email at [office@forkliftking.com.au](mailto:office@forkliftking.com.au) or give us a call to discuss delivery options for your address.



## QUESTION #6

---

### WHAT IS THE DELIVERY COST?

#### ANSWER

Delivery cost varies with location, though we have a cost effective solution via the fleet of specialist trucks. Please give us a call and we are able to provide pricing for your forklift package and delivery over the phone.



## QUESTION #7

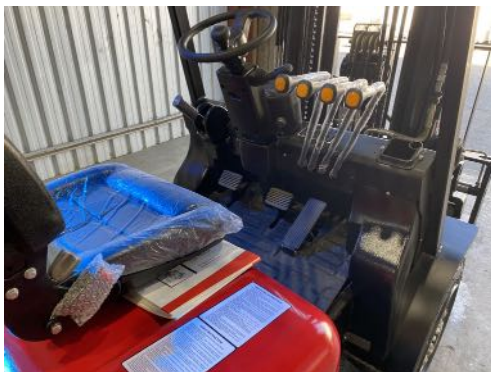
---

### HOW MUCH DEPOSIT DO I HAVE TO PAY?

---

#### ANSWER

In most cases, no deposit is required if you are financing your forklift. If you're paying directly up front, we take a small deposit to prepare your order, then when your forklift is ready to send, you pay the balance.



## QUESTION #8

---

### HOW LONG DOES FINANCE TAKE?

---

#### ANSWER

Finance is simple, straightforward, takes a few minutes over the phone and you will generally get your approval very quickly once you submit your documents. We use specialised finance brokers to take care of the finance for our customers, they are experienced with dealing with our products, which makes the process quick and easy.





**WWW.FORKLIFTKING.COM.AU**  
**1300 192 700**